

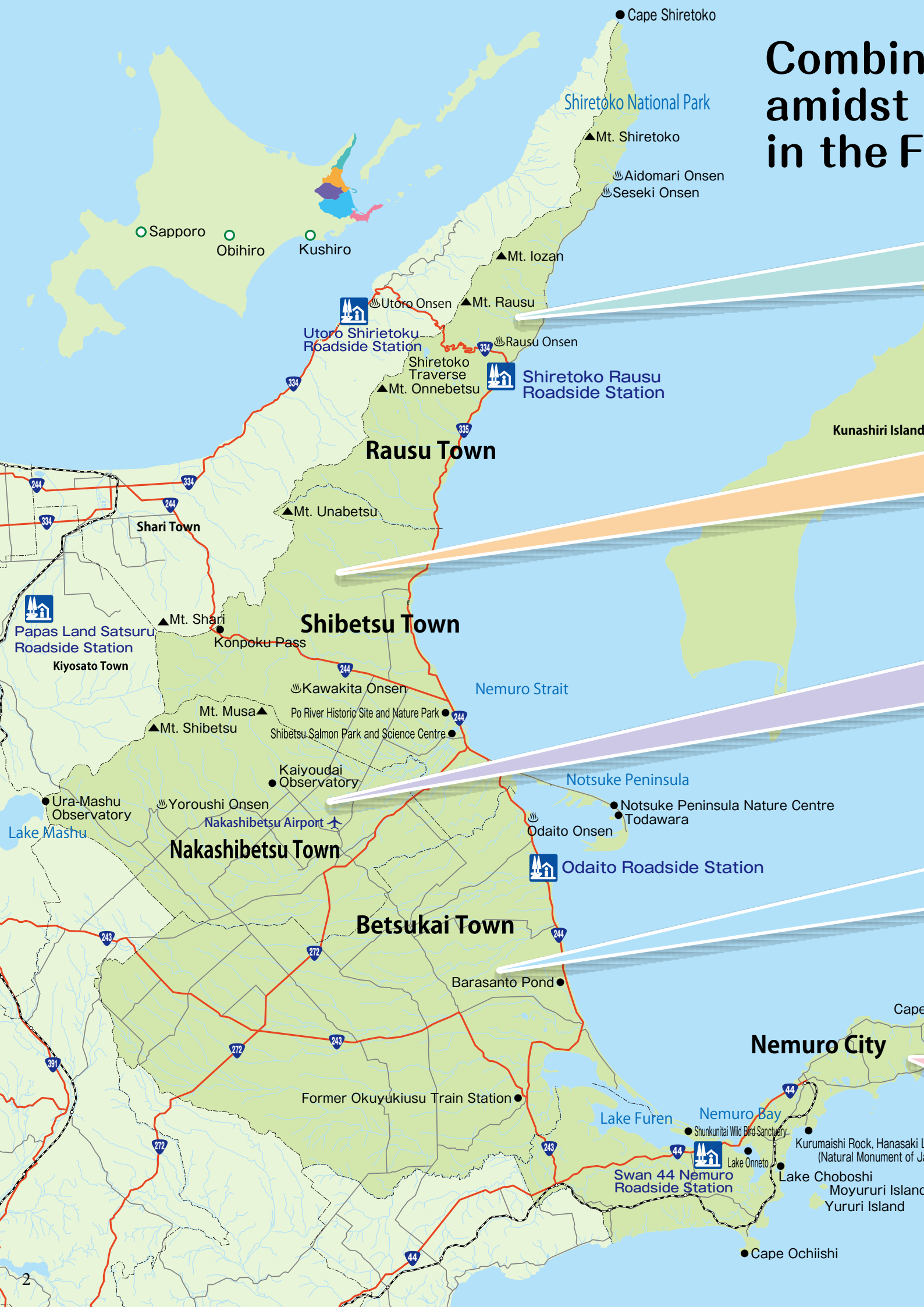
# East Hokkaido (Nemuro District) Experiential Learning Program

Agricultural Studies - Peace Studies - Environmental Studies - Human Resource Development - Food Education



**Nemuro District Educational Tourism Promotion Council**  
Nemuro City - Betsukai Town - Nakashibetsu Town - Rausu Town - Shibetsu Town

# Combining amidst in the F



# The fascinating study experiences the majestic nature of the Nemuro region, Far East of Japan.

## RAUSU TOWN

Rausu Town is a part of the Shiretoko Peninsula, an outstanding natural World Heritage Site. Sandwiched between the mountains and the sea, its rich waters are renowned for whale watching and bird watching, whilst hiking the Shiretoko Mountains offers breathtaking views. With natural hot springs to soothe tired bodies, it is an ideal location.



## SHIBETSU TOWN

At the foot of the Shiretoko mountain range and at the entrance to Notsuke Peninsula, Shibetsu is a town rich in agriculture and fishing. Surrounded by nature and perfectly situated between mountain and sea, it is said of Shibetsu that "the smallest gem shines brightest". The town was officially named one of "The Most Beautiful Villages in Japan" in 2007.



## NAKASHIBETSU TOWN

The symbol of Nakashibetsu is the 270m high Kaiyoudai Observatory. From here, the breathtaking panoramic 330° view stretches to the horizon over a latticework of pasture and windbreak forest. Driving along arrow straight roads surrounded by green fields, visitors can experience Hokkaido's magnificent scenery on their way to Yoroushi hot springs, a mecca for people who love onsen.



## BETSUKAI TOWN

Betsukai Town is most famous for being the dairy capital of Japan, with over 100,000 cows producing top quality beef and dairy products for the rest of the country. Betsukai is also home to precious wetland reserves recognized by the Ramsar Convention, such as Notsuke Peninsula, Notsuke Bay and Lake Furen. The beautiful traditions of the sea, such as the utasebune shrimp boats, combined with panoramic views of open grassland, make Betsukai an appealing stop for many visitors.



## NEMURO CITY

The easternmost city in Japan, Nemuro is at the gateway to the Pacific Ocean and the Okhotsk Sea. Nemuro is famous for its rare and bountiful seafood such as the hanasaki crab and sanma (Pacific saury). Home to important wetlands protected by the Ramsar Convention, such as Lake Furen and Shunkunitai, people come from all over the world to this bird watching paradise.



# 1 City 4 Towns Program Introduction



## Rausu Town

Rausu Town is situated on the east side of the Shiretoko Peninsula. Blessed with abundant nature, Shiretoko provides important habitats for rare animals in the surrounding mountains and sea, and was therefore given the status of a UNESCO Natural World Heritage Park in July 2005.

Against a backdrop of the peaks of Shiretoko Peninsula and nearby Kunashiri Island, cruise boats provide the stage to encounter some of the oceans' largest creatures, including orcas and sperm whales (Whale Watching Tour, etc.). Join the Fish Market Observation Tour to learn about the rich variety of seafood produce, and study how to use and make Rausu's high quality konbu (kelp) seaweed on the Making Konbu Snack Tour. Locally fished produce such as Atka mackerel provides the main ingredients for many foods, which you can learn to cook on the Tsumire (fish dumpling) Stew Tour.

## Shibetsu Town

Located to the south of Shiretoko Peninsula, Shibetsu is at the heart of East Hokkaido and its resources are central to the educational experience program. Local instructors share their expert knowledge combined with well-planned activities to provide highly regarded and rewarding study courses. Every effort is made to continually improve the quality and reach of the programs on offer to enhance the experience for students and visitors.

## Nakashibetsu Town

On the grassy plains of East Hokkaido, Nakashibetsu is host to wonderful nature and rich dairy farmland. The Kaiyoudai Observatory, located on top of a 270m hill, is the perfect place to gaze upon an impressive patchwork of pasture and windbreak forest, a Hokkaido Heritage Monument. On the edge of the perfectly curved horizon looking out to the Pacific Ocean, you can see beautiful Kunashiri Island, a part of the Northern Territories. Experience and learn more about the history and development of Nakashibetsu's agricultural industry and the windbreak forests on the Long Trail Walking Tour, or try making the locally produced cheeses and sausages for yourself.

## Nemuro City

The sun rises earliest at Nemuro, the easternmost city in Japan, only a few kilometers away from beautiful Cape Nosappu and the disputed Habomai Islands. Due to its proximity to the Northern Territories and historical links, Nemuro has many resources and facilities centered on peace education programs in connection with the islands. Situated between the Okhotsk Sea and Pacific Ocean, Nemuro Peninsula is naturally rich in produce from the sea. The peninsula has an unusually cool microclimate that is host to dairy study programs, as well as environmental study programs at Ramsar Convention sites such as Lake Furen and Shunkunitai Wild Bird Sanctuary.

## Betsukai Town

Betsukai Town provides the platform for two different study programs – the Big Dairy Program, and the Notsuke Peninsula Program.

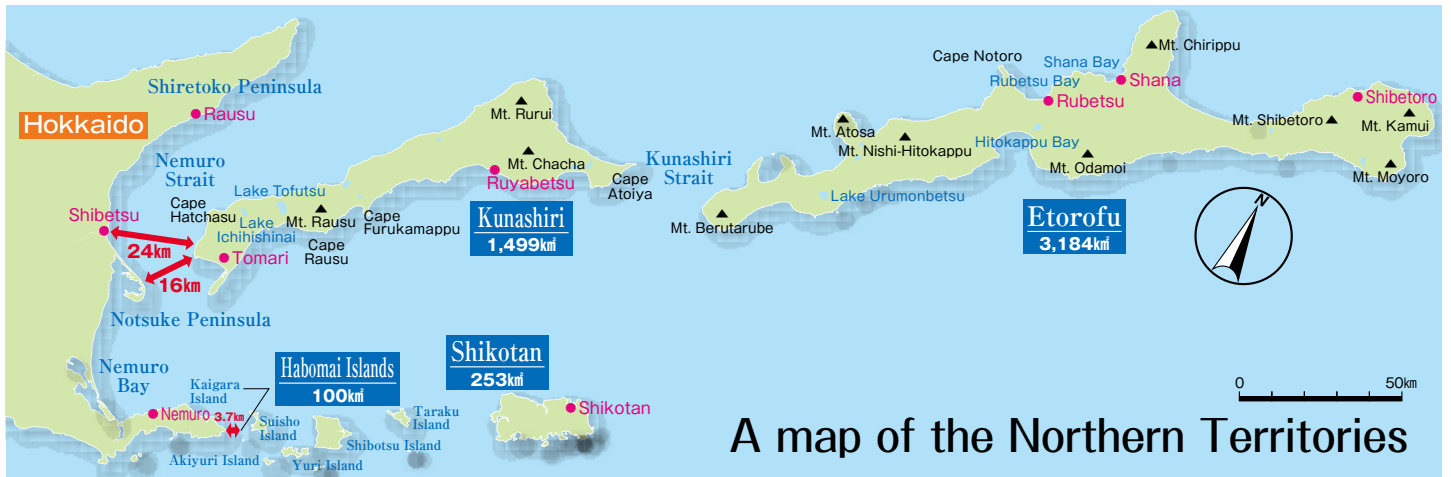
**Big Dairy:** As the biggest dairy producer in Japan, Betsukai Town covers a vast area, twice the size of Tokyo's 23 city wards. Half of the total area is given over to farming – an excellent opportunity to experience daily farming life, learn about dairy production from pasture to store shelf, and to study the social and agricultural development of early Hokkaido.

**Notsuke Peninsula:** the knowledgeable instructors at Notsuke Peninsula will guide you on an exploration of the largest sand spit peninsula in Japan and its surroundings. Study wild birds, flowers and animals on a scenic cruise or walk, and learn about the highly prized seafood such as giant scallops and Hokkai shrimp that are nurtured in Notsuke's unique habitats. Also, acquire further knowledge of the disputed Northern Territories - Kunashiri Island is just 16km away from the peninsula.

# Northern Territories Study Programs

KEY:  
**NE** Nemuro **B** Betsukai **NA** Nakashibetsu  
**R** Rausu **S** Shibetsu

Number of people (MAX) Time required (minutes) Dates available (month)



A map of the Northern Territories



Inside NIHORO (page 14)



Kunashiri Island



## Views of the Northern Territories **NE B R S**

From numerous observatories along the coast, view nearby Kunashiri Island across the Nemuro Strait to gain a deeper understanding of the dispute over the Northern Territories.

40 30 All year



## Talks from former residents - Northern Territories Study Course **NE B R S**

Immediately following the end of the Second World War, Soviet forces occupied the Japanese Northern Territories. This course includes talks from former island residents about the time of the occupation up to present day development of exchange programs and the movement to restore the islands to Japan.

200 120 All year



## Sea Cruise **NE B R S**

Get even closer to the Northern Territories by taking a cruise. On a clear day, it is possible to view buildings of former Japanese and current settlements on the islands.

45 150 5-10

# Fishing Industry Study Programs

KEY:  
 NB Nemuro B Betsukai WA Nakashibetsu  
 R Rausu S Shibetsu

Number of people (MAX) Time required (minutes) Dates available (month)



## Ice fishing with nets

B

In winter, observe fishermen cut through the thick ice of Lake Furen with chainsaws, then draw nets from beneath the ice to catch wakasagi (pond smelt).

30 90 1-2



## Rausu Harbor fish market and konbu storage facility

R

Get a sense of Rausu's key fishing industry by joining the live fishing auctions at the harbor fish market. Accompanied by a guide, learn from the professional auctioneers about their trade. At the konbu (kelp seaweed) storage facility, listen to experienced fishermen's explanation of the konbu industry and try to process konbu yourself.

40 45 4-2



## Unloading of the Shibetsu salmon boats

S

A guide will introduce you to a typically busy early morning at Shibetsu harbor, where scallops, salmon and other seafood are unloaded throughout the year. The bustling harbor is a real sight worth seeing despite the 4:30am start - in the past, tens of thousands of salmon have been unloaded in a single morning.

100 120 8-11



## Hokkai Shrimp Industry Experience B

Witness the production of Odaito's specialty food, from auction time to the special techniques used in processing. After size sorting, have a taste of the delicious results.

40 60 6-7  
10-11



## Cheese and Sausage Making NA

Use fresh local ingredients to make sausage and cheese in a typical factory setting. Learn about how value is added to raw products by turning them into everyday consumer goods.

20 180 All year



## Making Konbu Snacks R

After listening to a detailed explanation of the kelp seaweed industry and production methods, try your hand at cutting and packaging konbu to take home as souvenirs for friends and family.

40 90 All year



## Making Flaked Salmon R

Learn how to prepare flaked salmon from scratch, using salmon caught in local Rausu waters. Under the guidance of local fishermen, experience the true thrill of handling a full-size adult salmon, and afterwards, taste the results.

40 90 All year



## Preparing Salmon Roe S

Using fresh salmon caught from the waters of Shibetsu, make your own salmon roe - even the squeamish will enjoy eating the salmon roe they prepared themselves.

20 120 8-11



## Preparing Fresh Salmon S

Using freshly caught salmon unloaded at Shibetsu harbor, learn how to prepare and salt salmon. Only the best quality ingredients make this an experience to savor.

30 120 8-11

# Agricultural Study Programs

KEY:  
 NE Nemuro B Betsukai NA Nakashibetsu  
 R Rausu S Shibetsu

Number of people (MAX) Time required (minutes) Dates available (month)



## Dairy Industry Experience

B NE

Learn about the dairy farming industry by milking dairy cows and hand-feeding the calves. To complete the experience, try making butter as well.

40 120 All year



## Dairy Factory Visit

B

Visit the local Betsukai Dairy factory to observe how Betsukai protects its brand and reputation as the biggest and best dairy producer in Japan. Try making butter and learn more about the appeal of the dairy farming industry.

40 60 All year



## Potato Harvesting

S

Hokkaido is the largest potato producer in the country. On this course you will harvest your own potatoes and use them to make one of several delicious dishes.

30 180 9



## Farm Home Stay

B S

(With conditions) Stay and work alongside a local farming family for an unforgettable learning and cultural experience.

40 Over night All year except busy periods

# Nature Study Programs

KEY:  
NB Nemuro B Betsukai NA Nakashibetsu  
R Rausu S Shibetsu

Number of people (MAX) Time required (minutes) Dates available (month)



## Seal Watching

B

Take a guided tour on a cruise boat over the bay waters of Notsuke Peninsula, Japan's largest sand spit. Get up close to seals, birdlife and other beautiful nature.

150 60 5-10



## Cruise and Clam Digging Experience

B

After a scenic nature cruise across Notsuke bay to the tip of the peninsula, earn your lunch by digging for clams in the sand.

150 90 5-7



## Notsuke Peninsula Walking Course

B

As the largest sand spit in the country, Notsuke Peninsula is home to a rich array of wild birds, plants and flowers. Take a cruise boat across the bay, from where your experienced guide will lead you on an informative tour of the peninsula.

100 100 5-10



## Summer Footpath

B

Encounter the beautiful landscape and nature of rural East Hokkaido on this walk that follows the remains of the former Shibetsu railway line.

40 60 4-11



## Northern Jungle Canoe Tour

S

Explore the wilds of East Hokkaido canoeing the calm waters of Shibetsu wetlands, a well-kept secret.

20 90 5-10



## Long Trail Tour

NA

Walk this charming footpath that meanders through wooded valleys and open grassland, and study the area's historic windbreak forests up close for a fresh perspective of Hokkaido's history and cultural heritage.

40 180 All year



## Seawall Fishing at Shibetsu Seaside Park

S

Admire the view of Kunashiri Island across the Nemuro Strait whilst fishing the rich waters of the Shibetsu coast for salmon, flounder, and saffron cod.

30 180 5-11



## Lake Rausu and Sannonuma Pond Trek

R

Experience the grand nature of Shiretoko on a trek to see Lake Rausu, the peninsula's largest lake, as well as the perfect mirror-like reflections of Sannonuma Pond. Walk on snow as late as mid-summer.

40 180 5-9

# Nature Study Programs

KEY:  
 Nemuro Betsukai Nakashibetsu  
 Rausu Shibetsu

Number of people (MAX) Time required (minutes) Dates available (month)



## Whale Watching

R

Take an unforgettable cruise on the Nemuro Strait to meet the giants of the ocean. Set between the magnificent Kunashiri Island and Shiretoko mountains, this is one of the best places in the country to encounter orcas, whales and dolphins for a once-in-a-lifetime experience.

120x2 180 5-10



## Salmon Leap Viewing and Fish Ladder Study

R

Whilst watching autumn salmon leap up the river, study about the special relationship between mountain, forest and sea ecosystems that make the Shiretoko World Heritage Park unique.

20 30 9-11

# Salmon Study Programs

KEY:  
 Nemuro Betsukai Nakashibetsu  
 Rausu Shibetsu

Number of people (MAX) Time required (minutes) Dates available (month)



## Shibetsu Salmon Science Museum and Aquarium

S

Host to a wide variety of salmon species for viewing all year, witness the migration of wild salmon to their breeding grounds in September and October via a special display case. From the tower, view the vital Shibetsu River and majestic Shiretoko Mountains, as well as Kunashiri Island across the sea.

80 90 All year



## Salmon River Fishing

S

Try your hand at catching the autumn salmon in Churui River, located at the base of the World Heritage Shiretoko Peninsula and the first river in Japan to be opened to the public for salmon fishing.

20 180 8-10

# Festival and Culture Study Programs

KEY:  
 Nemuro Betsukai Nakashibetsu  
 Rausu Shibetsu

Number of people (MAX) Time required (minutes) Dates available (month)



## Todowara Taiko Drumming

S

Join the local taiko team to experience the intense sounds and beats inspired by nature.

Groups only 120 All year



## Shiretoko Ibuki-Taru

R

Inspired by local youths in Rausu and formed in 1971, the Shiretoko Ibuki-Taru club is a percussion group that uses wooden casks and mallets (traditionally used for storing soy and miso) to create dynamic performances inspired by the dramatic nature of Shiretoko.

Upon request 30 All year

# Cooking and Tasting Programs

KEY:  
 NB Nemuro B Betsukai NA Nakashibetsu  
 R Rausu S Shibetsu

Number of people (MAX) Time required (minutes) Dates available (month)



## Making Tsumire (fish dumpling) Stew R

Under the expert tuition of local fishwives, learn how to cut hokke (Atka mackerel) and make into fish dumplings, then cook using local ingredients such as Rausu konbu (kelp seaweed) to make a delicious accompaniment to your lunch.

40 90 All year



## Making Sakuradenbu (shredded dried cod) R

Enjoy spending time with the cheerful local fishwives of Rausu, who will instruct you in making sakuradenbu, using the best cod caught in local Rausu waters.

40 90 All year



## Making Potato Mochi S

After harvesting potatoes\*, steam and beat them using a wooden pestle and mortar, before mixing with starch to shape into potato cakes. Eat and enjoy.

(\*Potato harvesting in September only)

40 120 All year



## Making Caramel S

A local patissier will instruct you in the making of Hokkaido's original and famous nama caramel.

15 180 All year



## Shelling Scallops B S

Shell your own scallops and enjoy the tender texture and taste of fresh wild scallop caught in the nearby waters of Nemuro Strait.

20 90 Any month except Sept - Nov



## Cooking chanchanyaki (grilled salmon and vegetables) S

Combine local salmon, special miso paste, and vegetables to make the most original and authentic version of chanchanyaki, a traditional Hokkaido dish.

100 180 All year

# Winter Activity Programs

KEY:  
NB Nemuro B Betsukai NA Nakashibetsu  
R Rausu S Shibetsu

Number of people (MAX) Time required (minutes) Dates available (month)



## Winter Footpath Snowshoeing B

Snow blankets the grassy plains of East Hokkaido opening up new paths to explore. Experience this winter wonderland on snowshoes.

10 120 12-2



## Guided Tour of Notsuke Peninsula B

Wander across the snow and frozen sea as your guide points out features of Notsuke Peninsula in winter.

30 120 1-3



## Skiing S

The cold winter creates the perfect snow conditions to experience skiing amongst silver birch and pine trees, with stunning views of the Nemuro Strait, Kunashiri Island and frozen Notsuke Peninsula in the distance.

40 180 1-2



## Snowshoe Trek R S

Inaccessible in summer, discover snow-covered valleys and hidden rivers, and look for traces of wild animals such as bear and deer. Learn about the local terrain and forest.

20 180 1-3



## Making Ice Candles S

The deep chill of winter provides the perfect opportunity to create your own ice candle.

50 60 1-3



## Igloo Building S

With teamwork and perseverance, build your own igloo for an unforgettable learning experience.

20 360 2



## Drift Ice Viewing B R S

Ice flows southwards from the Amur River in Russia for thousands of kilometers, reaching the Nemuro Strait in mid-February to mid-March. View the ice as it stretches across the sea to Kunashiri Island, bringing with it the vital nutrients that are the ingredients for life and industry.

100 120 2-3

## Winter Wildlife



Earless seal



Steller's sea eagle



White-tailed eagle



Spotted seal



Ezo deer



Ezo red fox

# East Hokkaido (Nemuro Region) Specialties



Hokkai Shrimp



Shibetsu-Maehama lunch box



Salmon roe on rice



Sea urchin



Young salmon



Escalope (Nemuro)



Mackerel pike (Nemuro)



Mackerel pike rolled sushi (Nemuro)



"Oranda" crackers (Nemuro)



Hanasaki crab (Nemuro)



Crab and miso broth



Betsukai surf clam on rice



Betsukai salmon ochazuke broth



Betsukai Surf clam cutlet on rice



Betsukai grilled jumbo scallops



Fried Hokkai shrimp on rice (Betsukai)



Jumbo scallop burger (Betsukai)



Shibetsu-Maehama sashimi on rice



Chanchanyaki grilled salmon and vegetables



Scallop sashimi



Izushi fermented sushi



Sliced salmon ruibe



Autumn hotpot



Grilled pacific saury



Salted grilled salmon



Siberian onion



Salmon shabu-shabu (Shibetsu)



Rausu Atka mackerel burger



Rausu Atka mackerel



Rausu konbu kelp seaweed



Potato mochi cakes (Shibetsu, Nakashibetsu)



Nikujaga meat and potato stew



Potatoes (Shibetsu, Nakashibetsu)



Gouda cheese (Shibetsu, Nakashibetsu)



Yoghurt (Shibetsu, Nakashibetsu)

# Experiential Learning Program Facilities



## Swan 44 Nemuro Roadside Station

1 Rakuyo-cho, Nemuro-shi  
TEL0153-25-3055·FAX0153-25-3058

A convenient spot to visit nearby Lake Furen, a wildlife haven protected by the Ramsar Wetland Convention.

**Capacity** 100

**Opening Hours** 9:00 - 17:00 (April - June, October)  
9:00 - 18:00 (July - September)  
9:00 - 16:00 (November - March)

**Closed** New Year Holidays and Mondays (November - March only)  
\*If Monday falls on a public holiday, closed on Tuesday (November - March only)

**Length of visit** 30 minutes **Guide** No



## Shiretoko - Rausu Roadside Station

361 - 1 Honcho, Rausu-cho, Menashi-gun  
TEL0153-87-5151

Situated overlooking Nemuro Strait and Kunashiri Island, a perfect place to stop, admire the view and enjoy some of the local delicacies.

**Capacity** 100

**Opening Hours** 9:00 - 17:00 (May - October)  
10:00 - 17:00 (November - April)

**Closed** New Year Holidays

**Length of visit** 30 minutes **Guide** No



## Odaito Roadside Station and Lookout

5 - 27 Odaito, Betsukai-cho, Notuske-gun  
TEL0153-86-2449

Combine a visit to admire the view and learn more about the history of the Northern Territories on display.

**Capacity** 10 - 30

**Opening Hours** 9:00 - 17:00 (May - October)  
9:00 - 16:00 (November - April)

**Closed** New Year Holidays and Mondays (November - April only)  
\*If Monday falls on a public holiday, closed on Tuesday (November - April only)

**Length of visit** 30 minutes **Guide** Yes



## Nemuro City Shunkunitai Wild Bird Sanctuary Nature Centre

103 Toubai, Nemuro-shi  
TEL0153-25-3047·FAX0153-25-8570

The nature centre is adjacent to Shunkunitai, protected under the Ramsar Wetland Convention.

**Capacity** 40

**Opening Hours** 9:00 - 17:00 (April - September)  
9:00 - 16:30 (October - March)

**Closed** New Year Holidays and Wednesdays  
\*If Wednesday falls on a public holiday, closed on Thursday

**Length of visit** 30 minutes **Guide** Yes



## Nemuro City History and Nature Museum

209 Hanasaki-minato, Nemuro-shi  
TEL·FAX0153-25-3661

Learn more about the Nemuro region's history and nature accompanied by a knowledgeable guide.

**Capacity** 40

**Opening Hours** 9:30 - 16:30

**Closed** New Year Holidays, Mondays, public holidays

**Length of visit** 30 minutes **Guide** Yes



## Northern Islands Cultural Exchange Center (NIHORO)

110 - 9 Honioi, Nemuro-shi  
TEL0153-23-6711·FAX0153-23-6713

Guides explain in detail the history, nature, culture of the Northern Territories. Attend a lecture given by former residents of the islands.

**Capacity** 120

**Opening Hours** 9:00 - 17:00

**Closed** New Year Holidays and Mondays (except May - October)

**Length of visit** 60 - 120 minutes **Guide** Yes



## Hoppokan Museum

36 Nosappu, Nemuro-shi  
TEL0153-28-3277·FAX0153-28-3280

Located near Cape Nosappu and just a few kilometers away from the disputed Habomai Islands, this museum is dedicated to explaining the history of the Northern Territories dispute up to the modern day.

**Capacity** 80

**Opening Hours** 9:00 - 17:00 (March 16 - November 15)  
9:00 - 16:30 (November 16 - March 15)

**Closed** New Year Holidays and Mondays November - April (May - October open everyday)

**Length of visit** 60 minutes **Guide** Yes



## Former Okuyukiusu Train Station

15 - 12 Okuyuki, Betsukai-cho, Notsuke-gun  
TEL0153-75-2111·FAX0153-75-2497 (Betsukai Town Office)

A remnant of Hokkaido's pioneer days, this former train station still stands in its original place.

**Capacity** 100

**Opening Hours** 10:00 - 16:30

**Closed** November 1 - April 30 and the 1st and 3rd Monday of the month

**Length of visit** 30 minutes **Guide** Yes



## Betsukai Local Museum and Family Archives

30 Betsukai Miyamai-cho, Betsukai-cho, Notuske-gun  
TEL0153-75-0802

Artifacts from the late Edo era as well as a mammoth fossil are on display.

**Capacity** 10 - 50

**Opening Hours** 9:00 - 17:00

**Closed** New Year Holidays, Public Holidays, Sundays, 1st and 4th Monday and 1st, 3rd, 5th, Saturday of the month

**Length of visit** 30 minutes **Guide** Yes



### Notsuke Peninsula Nature Center

63 Notsuke, Betsukai-cho, Notsuke-gun  
TEL0153-82-1270

A paradise for wild birds and flowers, learn more about Notsuke at this nature center situated in the heart of the peninsula.

**Capacity** 15 - 30

**Opening Hours** 9:00 - 17:00 (April - October)  
9:00 - 16:00 (November - March)

**Closed** December 30th - January 5th

**Length of visit** 30 minutes **Guide** Yes



### Pilot Farm Museum

Toyohara, Betsukai-cho, Notsuke-gun  
TEL0153-75-2111·FAX0153-75-2497 (Betsukai Town Office)

Learn about the fascinating history of Hokkaido's early farming pioneers.

**Capacity** 10 - 20

**Opening Hours** By request

**Closed** New Year Holidays

**Length of visit** 30 minutes **Guide** Yes



### Biogas Plant

108-2 Nakanishibetsu, Betsukai-cho, Notsuke-gun  
TEL0153-75-2111·FAX0153-75-2497 (Betsukai Town Office)

Study about the biogas industry at this plant, in the vicinity of the country's biggest dairy producer.

**Capacity** 10 - 40

**Opening Hours** 9:00 - 17:00

**Closed** New Year Holidays, weekends and public holidays

**Length of visit** 30 minutes **Guide** Yes



### Kaiyoudai Observatory

Mataochi, Nakashibetsu-cho, Shibetsu-gun

Enjoy the spectacular panoramic view stretching to the horizon from the height of 270 meters, encompassing a patchwork of pasture and historically important windbreak forest.

**Capacity** 300

**Opening Hours** 9:00 - 17:30  
(End of April - End of October)  
\* October 9:00 - 16:30

**Closed** November - April

**Length of visit** 30 minutes **Guide** No



### Rausu Kunashiri Island Observatory

32 - 1 Rebun-cho, Rausu-cho, Menashi-gun  
TEL0153-87-4560

Situated 167 meters above Rausu Town, a perfect spot to view the harbor and look across the narrow Nemuro Strait towards Kunashiri Island. Make use of the telescope and learn more about the Northern Territories dispute in the gallery.

**Capacity** 70

**Opening Hours** 9:00 - 17:00 (April - October)  
10:00 - 15:00 (November - January)  
9:00 - 16:00 (February - March)

**Closed** New Year Holidays and Mondays

**Length of visit** 15 - 30 minutes **Guide** No



### Rausu Visitor Center

6-27 Yunosawa-cho, Rausu-cho, Menashi-gun  
TEL0153-87-2828

Providing easy-to-understand information on all aspects of the Shiretoko Peninsula - its nature, topography, history and culture, the center also houses a full-size specimen of an orca whale. The excellent DynaVision theatre captures the essence of Shiretoko's four seasons in impressive style.

**Capacity** From small groups up to 80

**Opening Hours** 9:00 - 17:00 (May - October)  
10:00 - 16:00 (November - April)

**Closed** New Year Holidays and Mondays

**Length of visit** 30 - 60 minutes **Guide** No



### Rusa Field House

8 Kitahama, Rausu-cho, Menashi-gun  
TEL0153-89-2722

This center offers support and advice as well as up-to-date information for those who plan to sea kayak, or hike the Shiretoko Mountains.

**Capacity** 30

**Opening Hours** 9:00 - 17:00 (May - October)  
10:00 - 16:00 (February - April)

**Closed** Tuesdays, closed in winter depending on snow conditions

**Length of visit** 20 - 30 minutes **Guide** No



### Rausu Local Archives Museum

Minehama-cho, Rausu-cho, Menashi-gun  
TEL0153-88-3850

Study the archaeology and history of the ancient Okhotsk culture, recent Ainu and Japanese history, and view exhibits of the local wildlife.

**Capacity** 40

**Opening Hours** 10:00 - 17:00

**Closed** New Year Holidays, weekends and public holidays

**Length of visit** 30 - 60 minutes **Guide** Yes

# Experiential Learning Program Facilities



## Rausu Deep Seawater Facility

Kyoei-cho, Rausu-cho, Menashi-gun  
TEL0153-87-2126

Closed to the public but available for educational tours, this deep seawater facility draws water from the ocean floor 300 meters below the surface. Study about its special properties, uses and application on a guided tour.

**Capacity** 40 (2 groups of 20)

**Opening Hours** 9:00 – 17:00

**Closed** New Year Holidays, weekends and public holidays

**Length of visit** 15–30 minutes **Guide** Yes



## Konbu Storage Facility

Kyoei-cho, Rausu-cho, Menashi-gun  
TEL0153-87-3360 (Shiretoko Rausu Tourist Association)

Closed to the public but available for educational tours, this facility is managed by the local fishermen's co-operative. Take a tour and listen to your guide explain about the kelp seaweed industry.

**Capacity** 40

**Length of visit** 30 minutes **Guide** Yes

\* Not open to the public, please contact for information regarding tours.



## Sea Urchin Hatchery

Misaki-cho, Rausu-cho, Menashi-gun  
TEL0153-87-3360 (Shiretoko Rausu Tourist Association)

Closed to the public but available for educational tours, this facility is managed by the local fishermen's co-operative. Learn how sea urchins and sea cucumbers are reared from eggs.

**Capacity** 40

**Length of visit** 30 minutes **Guide** Yes

\* Not open to the public, please contact for information regarding tours.



## Fish Rearing Farm

Kyoei-cho, Rausu-cho, Menashi-gun  
TEL0153-87-3360 (Shiretoko Rausu Tourist Association)

Closed to the public but available for educational tours, this facility is managed by the local fishermen's co-operative. Different to the more common practice of fish farming, learn how fish caught in open waters are reared to maturity at this facility.

**Capacity** 40

**Length of visit** 30 minutes **Guide** Yes

\* Not open to the public, please contact for information regarding tours.



## Shibetsu Salmon Science Museum and Aquarium

1-1-1 Nishi 6 Minami 1, Shibetsu-cho, Shibetsu-gun  
TEL0153-82-1141-FAX0153-82-1112

An excellent facility housing live exhibits and educational materials, come here to learn and appreciate the local culture, customs and industry that has evolved from the salmon.

**Capacity** 80

**Opening Hours** 9:30 – 17:00

**Closed** Wednesdays February – April and November  
(May – October open everyday)

**Length of visit** 90 minutes **Guide** Yes



## Asuparu Lifelong Learning Center

5-3 Nishi 5 Minami 1, Shibetsu-cho, Shibetsu-gun  
TEL0153-82-2900

A multi-purpose center for arts and crafts, music, cooking, cultural and communal activities, with meeting rooms and children's play area available.

**Capacity** Northern Territories Study Programs up to 200, Cooking Programs up to 40

**Opening Hours** 9:00 – 22:00

**Closed** December 30 – January 5



## Shibetsu Seaside Park Shibetsu Banya

Higashi 1 Minami 3, Shibetsu-cho, Shibetsu-gun  
TEL0153-82-2265

Cook chanchanyaki salmon and enjoy a barbecue at this scenic seaside location.

**Capacity** 100



## Shibetsu Museum of History and Culture

2784 Aza-Ichani, Shibetsu-cho, Shibetsu-gun  
TEL0153-82-3674

The museum showcases large collections of unearthed articles and ruins of the Ichani-Karikariusu prehistoric site, documents relating to the history of Shibetsu's peoples and early development, as well as natural monument wetland. A centre for the study of the history, nature and culture of Shiretoko.

**Capacity** 40

**Opening Hours** 9:00 – 17:00 (Last entry 16:30)

**Closed** November 24 – April 28



## Salmon House

1-2 Nishi 6 Kita 1, Shibetsu-cho, Shibetsu-gun  
TEL0153-82-1121

A part of the Salmon Park in combination with the Shibetsu Salmon Science Museum and Aquarium, the Salmon House offers fresh fish, local specialties and souvenirs.

**Capacity** 130

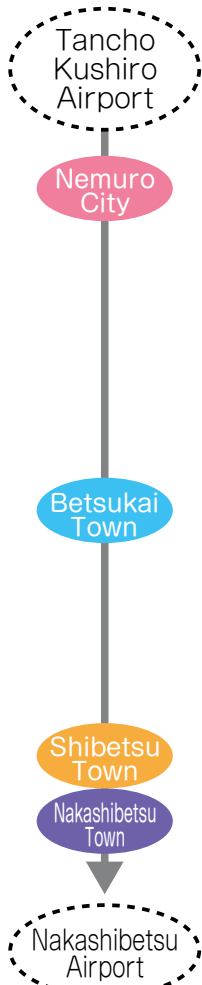
**Opening Hours** 10:00 – 16:30 (May – December)

**Closed** January – April and every Wednesday in November

## Model Course (approx 80 people starting Kushiro Airport)

# Hokkaido Farm and Nature Course

◎Start Tancho Kushiro Airport, finish Nakashibetsu Airport  
◎For period May – October



Day	Time (approximate)	Itinerary Details	Duration (Group A/B) (minutes)	Over night
1	12:20	✈️ Lunch at Kushiro Airport upon arrival		Nemuro City
		🚌 ~Bus to Nemuro area	AB 150	
	14:00	Group A: Itoh Farm, Akasato - Dairy farm experience		
	14:30	Group B: NIHORU — Northern Territories study	AB 120	
	16:00	🚌 Bus to Nemuro City	A 60	
	16:30	🚌 Bus to Nemuro City	B 30	
	17:00	Arrive at lodgings, dinner		
2	8:30	🚌 Bus to study locations in Nemuro	A 30 B 60	Betsukai Town
	9:00	Group A: NIHORU — Northern Territories study		
	9:30	Group B: Itoh Farm, Akasato - Dairy farm experience	AB 120	
	11:00	🚌 Bus to Betsukai area, lunch	A 60	
	11:30	🚌 Bus to Betsukai area, lunch	B 30	
	13:30	Dairy factory visit, Pilot Farm Museum, Biogas plant	AB 210	
	17:30	Arrive at lodgings, dinner		
3	8:30	🚌 Bus to study locations in Betsukai	AB 30	Shibetsu Town
	9:00	Group A: Odaito to Notsuke cruise	AB 120	
	11:00	🚌 Bus to Shibetsu area, lunch		
	13:00	Shibetsu study programs - free choice (cooking, outdoors activity, factory visit etc.)	AB 240	
	17:30	Arrive at lodgings, dinner		
4	8:30	🚌 Bus to study locations in Nakashibetsu		
	9:00	Nakashibetsu study programs - free choice (Long trail, etc.)	AB 180	
	12:30	🚌 Bus to Nakashibetsu airport, lunch		
	14:20	✈️ Depart Nakashibetsu airport		

## Model Course (approx 80 people starting Memanbetsu Airport)

# Shiretoko Nature and Industry Course

◎Start Memanbetsu Airport, finish Nakashibetsu Airport  
◎For period May – October



Day	Time (approximate)	Itinerary Details	Duration (minutes)	Over night
1	13:00	✈️ Arrive at Memanbetsu Airport, 🚌 bus to Rausu area via Utoro	180	Rausu Town
	16:00	Shiretoko National Park Rausu Visitor Center	60	
	17:30	Arrive at lodgings, dinner		
2	8:30	🚌 Bus to study locations in Rausu		Shibetsu Town
	9:00	Rausu Kunashiri Island Observatory. Fish market observation		
	9:30	Rausu study programs - free choice (making konbu snacks/making fish dumpling stew)	180	
	13:00	Sea cruise: Northern Territories and nature study	150	
	15:30	🚌 Bus to Shibetsu area	90	
	17:00	Arrive at lodgings, dinner		
3	8:30	🚌 Bus to study locations in Shibetsu		Nakashibetsu Town
	9:00	Shibetsu study programs - free choice (cooking, outdoors activity, factory visit etc.) - Lunch in Shibetsu	All day	
	16:00	🚌 Bus to Nakashibetsu	60	
	17:00	Arrive at lodgings, dinner		
4	8:30	🚌 Bus to study locations in Nakashibetsu		
	9:00	Nakashibetsu study programs - free choice (Long trail, etc.)	180	
	12:30	🚌 Bus to Nakashibetsu airport, lunch		
	14:20	✈️ Depart Nakashibetsu airport		

# Hotel and Lodgings Information



## Hotel Nemuro Kaiyoutei

2 - 24 Tokiwa-cho, Nemuro-shi  
TEL0153-22-8881・FAX0153-22-8885

**Rooms** 28  
**Capacity** 112  
**Public bath capacity** Men 20 Women 20  
**Dining capacity** 112



## Shogetsu Ryokan

2 - 3 Umagae-cho, Nemuro-shi  
TEL0153-23-5137・FAX0153-23-6236

**Rooms** 15  
**Capacity** 48  
**Public bath capacity** Men 6 Women 4  
**Dining capacity** 48



## Ryokan Nibiki

2 - 64 Nishihama-cho, Nemuro-shi  
TEL0153-23-2101・FAX0153-23-2104

**Rooms** 22  
**Capacity** 60  
**Public bath capacity** Men 8 Women 6  
**Dining capacity** 60



## Notsuke Yumoto Utaseya

132 Odaito Minato-cho, Betsukai-cho, Notsuke-gun  
TEL0153-86-2221・FAX0153-86-2177

**Rooms** 18  
**Capacity** 60  
**Public bath capacity** Men 10 Women 10  
**Dining capacity** 60



## Uminoshuku Misaki

35 Odaito Misaki-cho, Betsukai-cho, Notsuke-gun  
TEL0153-75-2345・FAX0153-86-2706

**Rooms** 9  
**Capacity** 28  
**Public bath capacity** 2  
**Dining capacity** 28



## Bekkai Kourakuen

141 - 100 Betsukai, Betsukai-cho, Notsuke-gun  
TEL0153-75-0711・FAX0153-75-0722

**Rooms** 12  
**Capacity** 38  
**Public bath capacity** Men 50 Women 50  
**Dining capacity** 38



## Nishishunbetsu Onsen Clover House Pension

95 Nishishunbetsu, Betsukai-cho, Notsuke-gun  
TEL・FAX0153-77-1170

**Rooms** 5  
**Capacity** 18  
**Public bath capacity** Men 18 Women 18  
**Dining capacity** 18



## Betsukai Makibanoyu Shimafukuro

321 Nishishunbetsu, Betsukai-cho, Notsuke-gun  
TEL0153-77-2960・FAX0153-77-2825

**Rooms** Twin 5  
**Capacity** 30  
**Public bath capacity** Men 40 Women 40  
**Dining capacity** 30



## Ryokan Ishikawaya

1 Nishihoncho, Betsukai-cho, Notsuke-gun  
TEL0153-75-2077・FAX0153-75-0125

**Rooms** 17  
**Capacity** 60  
**Public bath capacity** Men 15 Women 5  
**Dining capacity** 40



## Mitsubachi no Shuku

4-39 Kotobukicho, Betsukai-cho, Notsuke-gun  
TEL・FAX0153-75-3610

**Rooms** 7  
**Capacity** 17  
**Public bath capacity** 2  
**Dining capacity** 17



## Betsukai Park Hotel

1 - 11 Nishishunbetsu Ekimae, Betsukai-cho, Notsuke-gun  
TEL0153-77-2016・FAX0153-77-2352

**Rooms** 20  
**Capacity** 65  
**Public bath capacity** Men 7 Women 2  
**Dining capacity** 65



## Hotel Yorouchi

519 Yorouchi, Nakashibetsu-cho, Shibetsu-gun  
TEL0153-78-2224・FAX0153-78-2251

**Rooms** 25 (23 Japanese, 2 Western)  
**Capacity** 100  
**Public bath capacity** Men 20 Women 20  
**Dining capacity** 100



## Toyo Grand Hotel

Kita 1 Higashi 20, Nakashibetsu-cho, Shibetsu-gun  
TEL0153-73-1234・FAX0153-73-1040

**Rooms** Single 34, Twin 25, Japanese 15, Double 5, Suite 2  
**Capacity** 178 **Public bath capacity** Men 20 Women 20  
**Dining capacity** 178



## Marue Onsen Hotel

Kita 3 Nishi 1, Nakashibetsu-cho, Shibetsu-gun  
TEL0153-73-3815・FAX0153-72-5088

**Rooms** Japanese 20, Single 10, Twin 5  
**Capacity** 120  
**Public bath capacity** Men 20 Women 20  
**Dining capacity** 60



## Marue Onsen Hotel Tawarabashi

40 - 36 Aza-Tawarabashi, Nakashibetsu-cho, Shibetsu-gun  
TEL0153-78-7888・FAX0153-78-8811

**Rooms** Japanese 18, Single 2, Japanese-Western 2  
**Capacity** 78  
**Public bath capacity** Men 20 Women 20  
**Dining capacity** 78



#### Rausu Daiichi Hotel

Yunosawa-cho, Rausu-cho, Menashi-gun  
TEL0153-87-2259-FAX0153-87-2277

**Rooms** Japanese 18, Western 18  
**Capacity** 100  
**Public bath capacity** Men 30 Women 20  
**Dining capacity** 70



#### Hotel Mine no Yu

Yunosawa-cho, Rausu-cho, Menashi-gun  
TEL0153-87-3001-FAX0153-87-3025

**Rooms** Japanese 29, Western 2  
**Capacity** 80  
**Public bath capacity** Men 15 Women 15  
**Dining capacity** 80



#### Rausu no Shuku Marumi

Yagihama-cho, Rausu-cho, Menashi-gun  
TEL0153-88-1313-FAX0153-88-2128

**Rooms** Japanese 29, Japanese-Western 18  
**Capacity** 170  
**Public bath capacity** Men 15 x 2 Women 15 x 2  
**Dining capacity** 100



#### Ryokan Narita

Nishi 1 Minami 7, Shibetsu-cho, Shibetsu-gun  
TEL0153-82-1500

**Rooms** Japanese 10  
**Capacity** 34  
**Public bath capacity** Men 5 Women 2  
**Dining capacity** 15



#### Minshuku Sencho no Ie

Higashi 1 Minami 8, Shibetsu-cho, Shibetsu-gun  
TEL0153-82-3051

**Rooms** Japanese 12  
**Capacity** 45  
**Public bath capacity** Men/women 4  
**Dining capacity** 24



#### Hotel Wakamatsu

Higashi 1 Minami 3, Shibetsu-cho, Shibetsu-gun  
TEL0153-82-2153

**Rooms** Japanese 3, Single 6, Twin 4  
**Capacity** 65  
**Public bath capacity** Men 5 Women 8  
**Dining capacity** 23



#### Shibetsugawa Onsen Hotel Kawabata

Nishi 1 Minami 3, Shibetsu-cho, Shibetsu-gun  
TEL0153-82-2006

**Rooms** Japanese 18, Japanese-Western 2  
**Capacity** 90  
**Public bath capacity** Men 10 Women 10  
**Dining capacity** 40 and 20 in two rooms



#### Onsen Hotel Kusunoki

Nishi 1 Minami 8, Shibetsu-cho, Shibetsu-gun  
TEL0153-82-3411

**Rooms** Japanese 18  
**Capacity** 72  
**Public bath capacity** Men 25 Women 25  
**Dining capacity** 70



#### Shibata Ryokan

Nishi 2 Minami 6, Shibetsu-cho, Shibetsu-gun  
TEL0153-82-2097

**Rooms** Japanese 12  
**Capacity** 43  
**Public bath capacity** Men 5 Women 3  
**Dining capacity** 24

### Nemuro Region and Environs

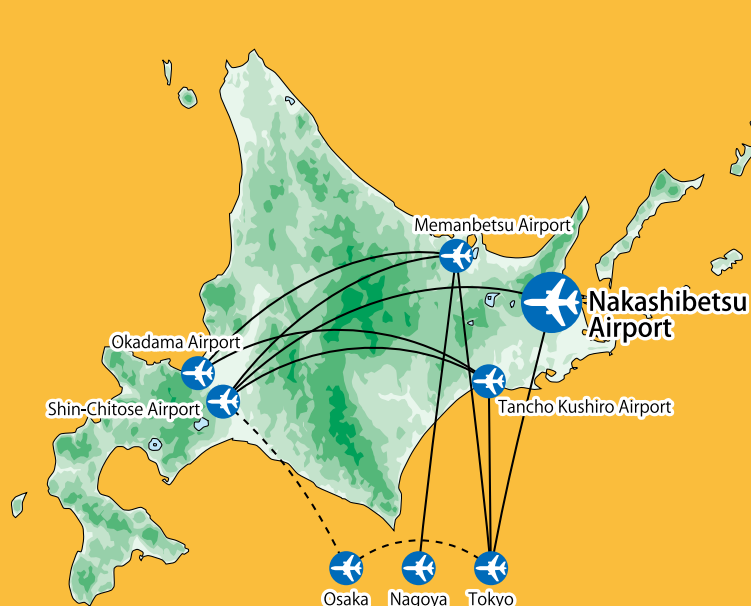
Distance and time between major population centers



\* Driving times calculated at an average speed of 50km/h, using the nearest national highways.

#### Nakashibetsu Airport





### By Air

#### —Nakashibetsu Airport—

Nakashibetsu Airport	TEL 0153-73-5601
Tokyo Haneda ⇄ Nakashibetsu	1 hr 40min (approx.)
Sapporo Chitose ⇄ Nakashibetsu	55min

#### —Tancho Kushiro Airport—

Tancho Kushiro Airport	TEL 0154-57-8304
Tokyo Haneda ⇄ Tancho Kushiro Airport	1 hr 35min (approx.)
Sapporo Chitose ⇄ Tancho Kushiro Airport	45min
Sapporo Okadama ⇄ Tancho Kushiro Airport	45min

#### —Memanbetsu Airport—

Memanbetsu Airport	TEL 0152-74-3115
Tokyo Haneda ⇄ Memanbetsu Airport	1 hr 35min (approx.)
Sapporo Chitose ⇄ Memanbetsu Airport	45min
Sapporo Okadama ⇄ Memanbetsu Airport	50min
Nagoya ⇄ Memanbetsu Airport	1 hr 50min

### Tourist Information

Nemuro Tourism Federation	TEL 0153-77-9644	Shibetsu Tourist Association	TEL 0153-82-2131
Nemuro Tourist Association	TEL 0153-24-3104	Shibetsu Tourist Information Center (May - October)	TEL 0153-82-2265
Betsukai Tourist Association	TEL 0153-75-2111	Shiretoko Rausu Tourist Association	TEL 0153-87-3360
Notsuke Peninsula Nature Center	TEL 0153-82-1270	Shiretoko Rausu Tourist Information Center	TEL 0153-87-3330
Odaito Tourist Information Center	TEL 0153-86-2533		
Nakashibetsu Tourist Association	TEL 0153-77-9733	Swan 44 Nemuro Roadside Station	TEL 0153-25-3055
Nakashibetsu Tourist Information Center	TEL 0153-73-4787	Odaito Roadside Station	TEL 0153-82-2449
Nakashibetsu Airport Tourist Information Center	TEL 0153-73-5651	Shiretoko Rausu Roadside Station	TEL 0153-87-5151

### Travel Organizations and Services

Japan Railway (JR) Kushiro Branch Nemuro Station	TEL 0153-24-3208	Nishibetsu Hire (Betsukai)	TEL 0153-75-2046
Nemuro Transport Company	TEL 0153-24-2201	Hokuto Hire (Nakashibetsu)	TEL 0153-72-1222
Nemuro Transport Ariso Office	TEL 0153-24-8818	Nitto Transport Company (Nakashibetsu)	TEL 0153-72-3231
Nemuro Transport Attoko Office	TEL 0153-26-2655	Nitto Transport Shibetsu Office	TEL 0153-82-4001
Nemuro Transport Nakashibetsu Office	TEL 0153-73-4456	Rausu Hire	TEL 090-6693-3075
Akan Bus Company	TEL 0154-37-2221	Eki Rent-a-car Nemuro Office	TEL 0153-24-3208
Akan Bus Nakashibetsu Office	TEL 0153-73-4370	Toyota Rent-a-car Nemuro Office	TEL 0153-24-0100
Akan Bus Shibetsu Office	TEL 0153-82-2155	Nemuro Choinori Car Rental	TEL 0120-211-043
Akan Bus Rausu Office	TEL 0153-87-2046	Toyota Rent-a-car Nakashibetsu Airport	TEL 0153-78-8100
Kushiro Bus Company	TEL 0154-36-8181	Times Car Rental Nakashibetsu Airport	TEL 0153-72-5656
Shari Bus Company	TEL 0152-23-0766	Nissan Rent-a-car Nakashibetsu Airport	TEL 0153-73-5703
Asahi Kankou Bus Nakashibetsu Office	TEL 0153-73-5151	Nippon Rent-a-car Nakashibetsu Airport	TEL 0153-72-0919
Betsukai Chiiki Seikatsu Bus	TEL 0153-79-5201	Orix Rent-a-car Nakashibetsu	TEL 0153-72-8489
Nakashibetsu Municipal Bus	TEL 0153-73-3111	Choinori Rent-a-car Nakashibetsu	TEL 0153-73-2411
Chuo Hire Company (Nemuro)	TEL 0153-24-2141	Doutou Rent-a-car Nakashibetsu	TEL 0153-73-3443
Nemuro Hire Company	TEL 0153-24-4151	Hokubu Rent-a-car	TEL 0153-72-8333
Hokuto Taxi (Nemuro)	TEL 0153-23-5171	Tom Sawyer Rent-a-car Nakashibetsu	TEL 0153-73-5715

### Emergency and Medical Services

Nemuro Police Station	TEL 0153-24-0110	Nemuro City Hospital	TEL 0153-24-3201
Nakashibetsu Police Station	TEL 0153-72-0110	Nakashibetsu Town Hospital	TEL 0153-72-8200
Nemuro Fire Station	TEL 0153-24-3164	Shibetsu Hospital	TEL 0153-82-2111
Shibetsu Fire Station	TEL 0153-82-2319	Betsukai Town Hospital	TEL 0153-75-2311
Nakashibetsu Fire Station	TEL 0153-72-2181	Betsukai Town Hospital Odaito Clinic	TEL 0153-86-2625
Betsukai Fire Station	TEL 0153-75-0119	Betsukai Town Hospital Nishishunbetsu Clinic	TEL 0153-77-2350
Rausu Fire Station	TEL 0153-87-2119	Shiretoko Rausu Health Center	TEL 0153-87-2116
Nemuro Coast Guard	TEL 0153-24-3118	Nemuro Health Center	TEL 0153-23-5161
Hanasaki Coast Guard	TEL 0153-25-4012	Nakashibetsu Health Center	TEL 0153-72-2168
Rausu Coast Guard	TEL 0153-87-3999		